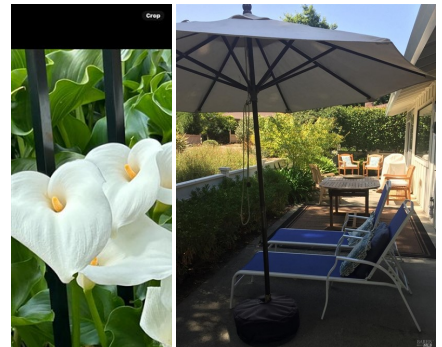




\$ 769,000



400 Pythian Rd, Santa Rosa, CA 95409

- » Beds: 3 | Baths: 2 Full
- » MLS #: 324071687
- » Single Family | 1,686 ft² | Lot: 4,103 ft²
- » More Info: 400PythianRd.isforsale.com



Jolene Cortright
(707) 477-6529 (Mobile)
(707) 539-3200 (Business)
jolene.cortright@century21.com
<https://jolenesells.com/>

CENTURY 21 EPIC Valley of the Moon
6580 Oakmont Drive
Santa Rosa, CA 95409

Immerse yourself in the elegance of this beautifully updated Oakmont Redwood model, bathed in abundant sunshine & boasting breathtaking views of the mountains and Sugarloaf golf course. Located on a spacious corner lot, this home features a study and a sun-drenched porch. The patio, encircled by stylish metal fencing, displays a vibrant array of daisies and miniature maples, complemented by azaleas flourishing along the front and side, enhancing the outdoor living space with a splash of color. Inside, the heart of the home is the kitchen with custom cabinets crafted from alder wood, a Viking 5-burner cooktop, a newer microwave, & a wine refrigerator a culinary enthusiast's dream. A large pantry adjacent to the kitchen provides extensive storage space. Key updates include a highly-rated HVAC system installed in 2019, a new roof in 2022, an updated water heater, and leaf guards. The garage offers ample storage as well. Residents of Oakmont enjoy top-notch amenities including swimming pools, a dog park, a community garden, and various enriching common interest groups. Located just moments away from award-winning wineries and restaurants, as well as sought-after recreation at nearby parks, this home offers an ideal setting, perfect for those seeking luxury and convenience.

